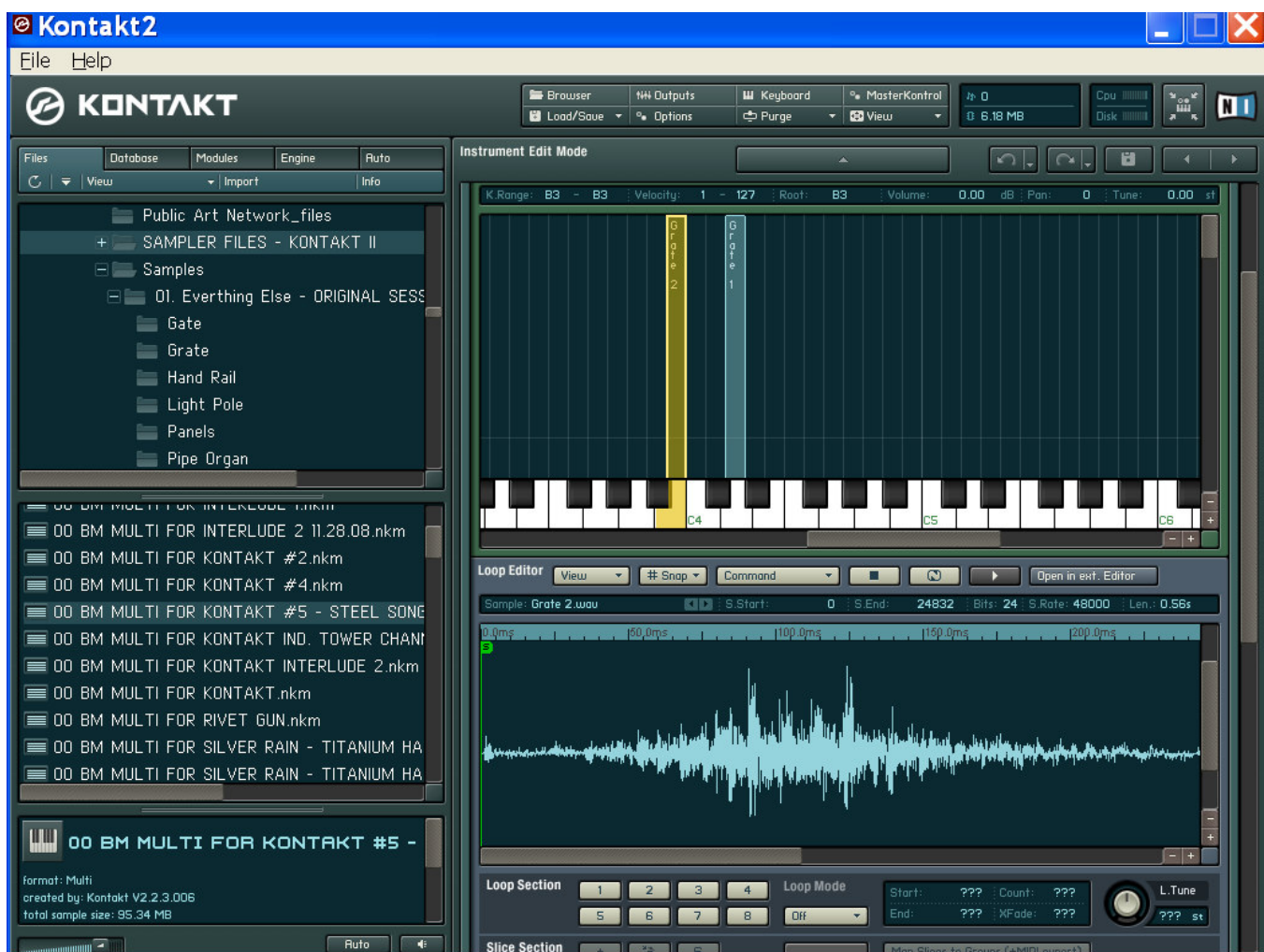




Print screen of the waveform of the Pedestrian Hand Rail



Print screen of the waveform from the Rainstick (three thousand 3/8th inch steel shot being dropped inside the bridge tower)



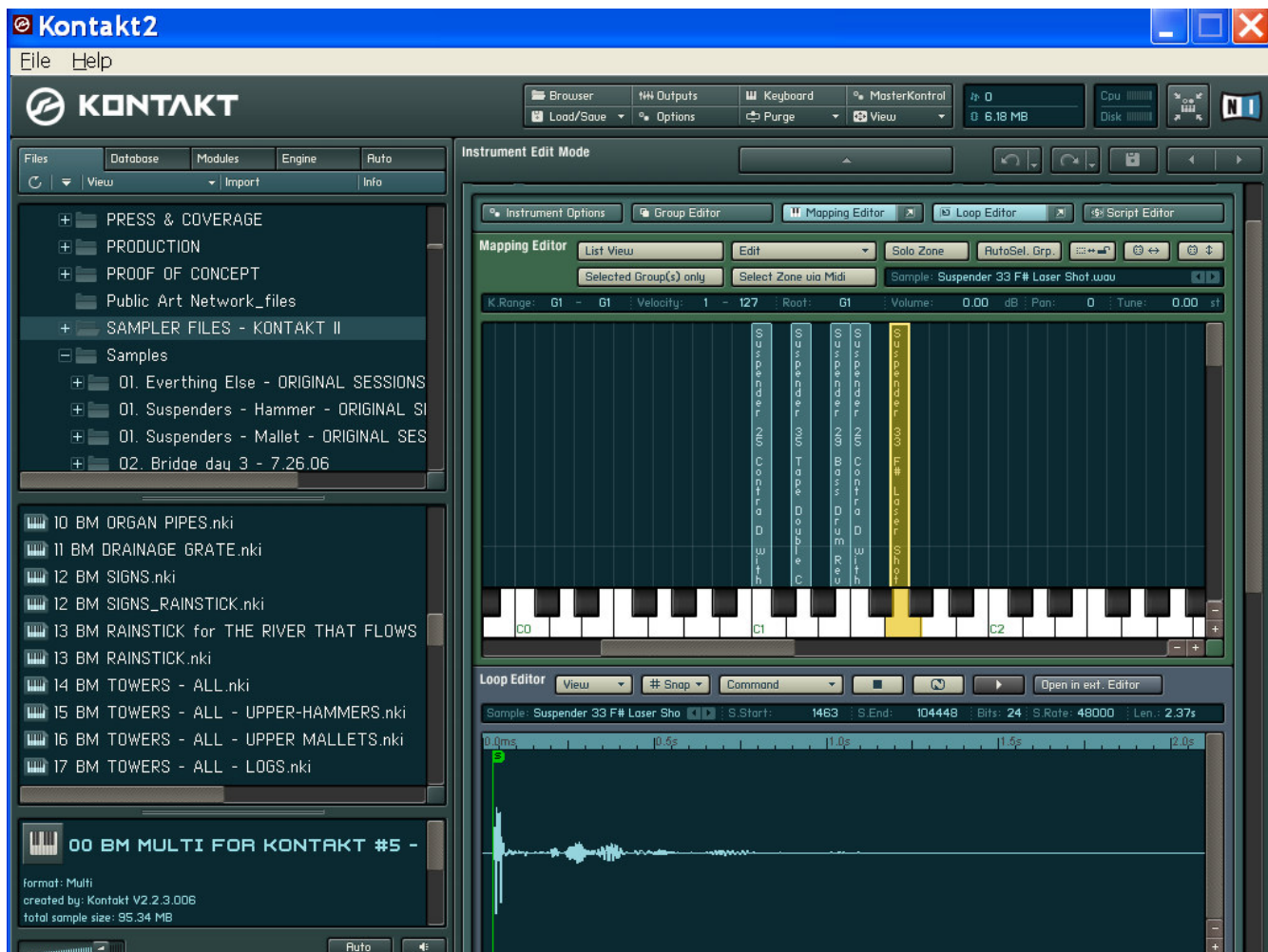
Print screen of the waveform of the Drainage Grate.



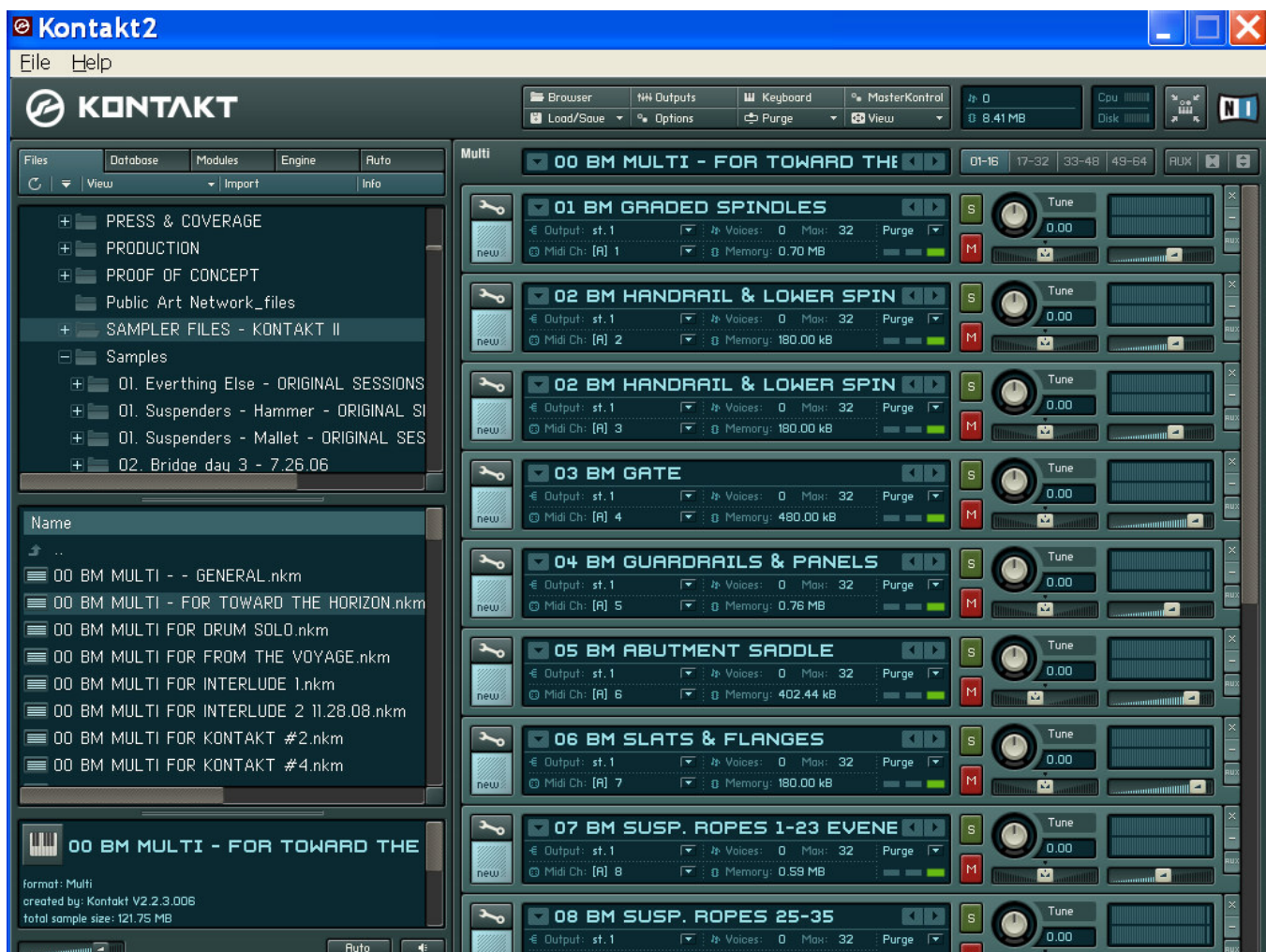
Print screen of a waveform from the Abutment Saddle.



Print screen of the waveform of the Upper Inner Tower struck loudly with a mallet.



Print screen of the waveform of Suspender Rope 33 (notice the residual vibrations after the initial strike, made from the energy running all the way up the rope and then back down again).



Print screen of the sampler setup for “Toward the Horizon.”